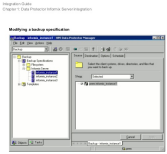


Download and Read Online Free Ebook How To Use Hp Dataprotector 8

Available link of PDF How To Use Hp Dataprotector 8



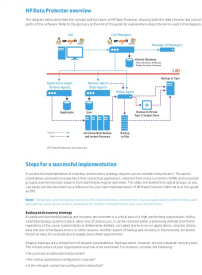
Scheduling backup sessions
You can schedule backup sessions at specific times or intervals. To make scheduling use the HP Data Protector Manager Scheduling Manager.

Scheduling example
To set an agent to backup at 01:00, 01:30, and 02:00 every weekday:

1. Open the Scheduling Manager and select the agent to be scheduled and click Add to open the Scheduling Manager dialog.
2. Under Scheduling, select Weekly. Under Time, select 01:00. Under Recurrence, select Every Day. Under Days, select the days of the week you want to backup.
3. Click OK. The Scheduling Manager dialog is closed and the agent is scheduled.
4. Click Help to view this document.

HP Data Protector 8.01 Page 4 of 83

[Download Full Pages](#) [Read Online](#) Hpe Data Protector integration guide HPE Data Protector Page



[Download Full Pages](#) [Read Online](#) HPE Data Protector Best Practice Guide



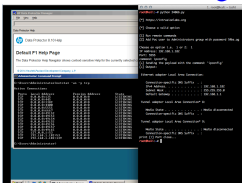
[Download Full Pages](#) [Read Online](#) Creating/Installing an Exchange SP Single Mailbox Backup in HP Install the Data Protector Agent on the Exchange MailboxServer – don't forget to activate the “MS Exchange Integration”



[Download Full Pages](#) [Read Online](#) HPE Data Protector Install HP Data Protector Client



[Download Full Pages](#) [Read Online](#) Creating/Installing an Exchange SP Single Mailbox Backup in HP



[Download Full Pages](#) [Read Online](#) HP Data Protector Manager Screenshot

[La lluvia de Ionah](#)

[Indonesia 5: Bali Lombok y Komodo mapa impermeable de carreteras. Escala 1:150.000. Reise Know-How.](#)

[La sombra de un embrujo](#)

[Navidad Blancaoscuracasinegra](#)

[Historia de Cristóbal Colon y de Sus Viajes: Escrita en Francés Segun Documentos Auténticos Sacados de España é Italia \(Classic Reprint\)](#)

[Hacia Los Mares De La Libertad \(B DE BOLSILLO\)](#)

[317 Kilómetros Y Dos Salidas De Emergencia \(ESPASA NARRATIVA\)](#)

[Cuentos para no contar](#)

[Macizo Central de Gredos mapa topográfico. Escala 1:25.000. IGN/CNIG.](#)

[El Cairo. Viaje Al Oriente I \(Zocos\)](#)

[Los Ángeles De cerca 3 \(Guías De cerca Lonely Planet\)](#)

[Ocho Centímetros \(Voces / Literatura\)](#)

[¡Contrólame! – Volumen 2](#)

[Top 10 Guías Visuales. Lisboa](#)

[El Oro Del Rey \(NARRATIVA\)](#)

[Luna Benamor Novela \(Classic Reprint\)](#)

[Monumentos Artísticos de La Habana: sus plazas palacios castillos...](#)

[Tiempo Después](#)

[Quiero a mi Papá : I Love My Dad \(Spanish Bedtime Collection\)](#)

[Los Embajadores \(PENGUIN CLÁSICOS\)](#)